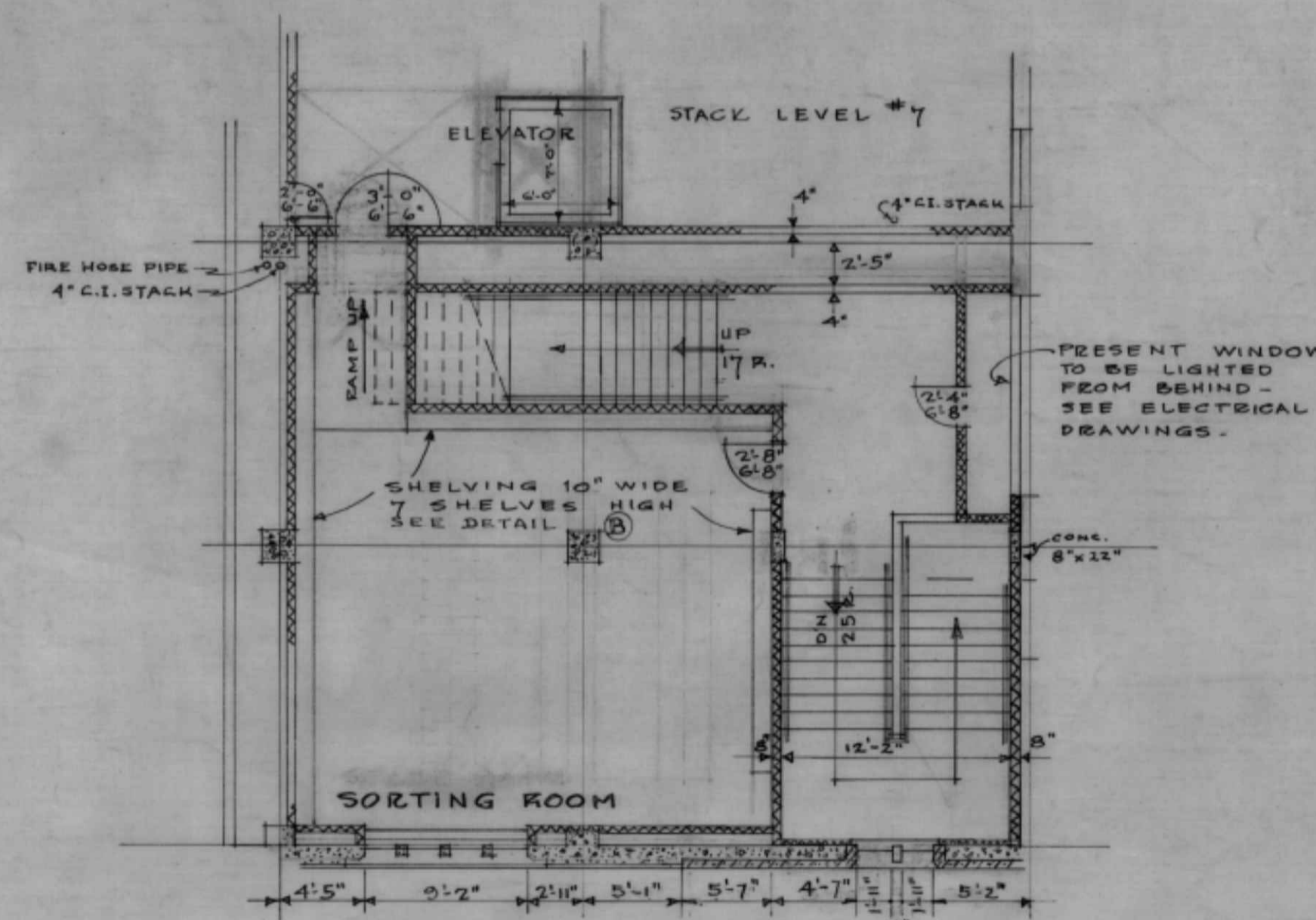


HALF DETAIL of NEW SCREEN
ON CONCOURSE LOOKING WEST

SCALE: 1/4" = 1'-0"



MEZZANINE FLOOR
STACK LEVEL # 7

NO.	REVISIONS CORR'D TO

LEGEND

	CONCRETE
	STONE
	HOLLOW TILE
	EXISTING BUILDING

LIBRARY - BUILDING
 SCALE - 1/8" = 1'-0"
 DATE - JULY 29/46
 SHARP & THOMPSON ARCHITECTS - VANCOUVER, B.C.
 UNIVERSITY OF BRITISH COLUMBIA

DWG # 4